

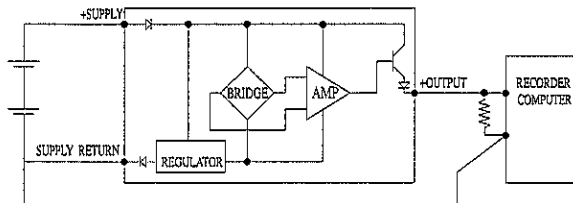
SENSOTEC

2080 Arlingate Lane Columbus, Ohio 43228
Tel (614) 850-5000 Fax (614) 850-1111

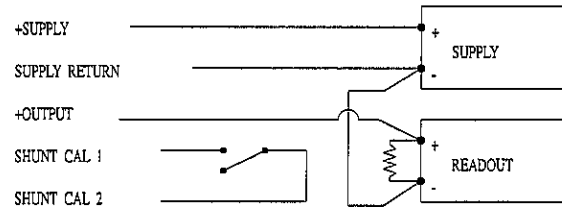
AMPLIFIED TRANSDUCER APPLICATION SHEET FOR CATALOG OPTION 2j (3-WIRE CURRENT AMP)

Output Type:	4-20 mA. 3-WIRE
Operating Voltage Range:	22 - 32 volts DC
Operating current max:	65 mA
Operating Temperature Range:	-40 to 225 Deg F
Reverse Voltage Protected:	Yes

Block Diagram



Typical Wiring to Supply & Readout



SHUNT CALIBRATION:

To Enable the Shunt Calibration - Short together the SHUNT CAL 1 and SHUNT CAL 2 Terminals or wires.

CALIBRATION:

Using the data from the CERTIFICATION OF CALIBRATION:

$$\text{Full scale OUTPUT} = \text{CALIBRATION FACTOR} + \text{ZERO OUTPUT}$$

$$\text{OUTPUT with shunt cal applied} = \text{SHUNT CAL OUTPUT} + \text{ZERO OUTPUT}$$

$$\text{ZERO OUTPUT} = \text{AMPLIFIER OUTPUT with zero pressure applied.}$$

GROUNDING:

System is usually tied to Earth ground at the Power Supply return.

OUTPUT CHARACTERISTICS:

